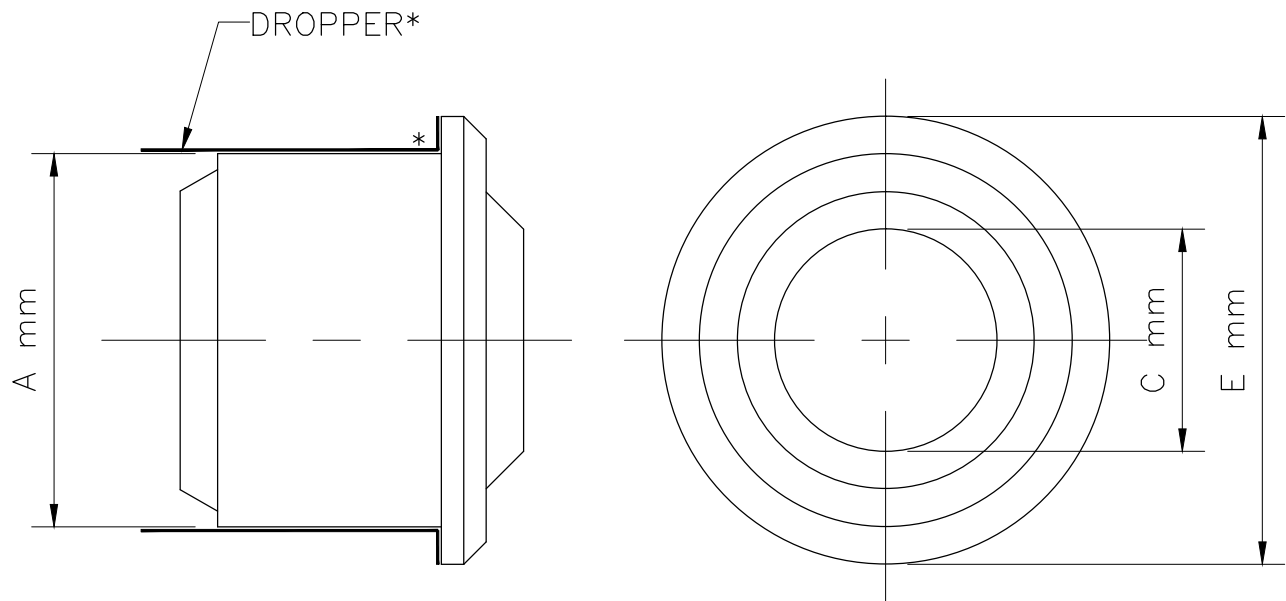


DO NOT SCALE THE DRAWING. IF IN DOUBT, PLEASE ASK



PRODUCT	CODE	A (mm)	C (mm)	E (mm)	DROPPER DUCT COLLAR
JET NOZZLE	AVJ 160	155	75	200	160
	AVJ 225	215	100	260	225
	AVJ 285	275	130	340	285
	AVJ 350	340	175	400	350
	AVJ 410	405	190	450	410

MATERIAL—ALUMINIUM 18G

NOTE—

* DROPPER

WITH FLANGE TO FIT TO NOZZLE

TOLERANCES ON ALL DIMENSION = +3mm
ALL TOLERANCES AS IS/INDUSTRY SPECIFICATONS

BALAJI AIRVENT PRODUCTS

24, AMRUT INDUSTRIAL ESTATE NO.1 K.T. INDUSTRIAL PARK,
GAURAIKADA, SECTOR-2, VALIV, VASAI (EAST) DIST. THANE-401 208

TITLE

G.A. DRAWING FOR JET NOZZLE

DRN.

-

DSGN.

-

DRG. NO. :

DATE

-

SCALE

N.T.S

SHT 1 OF 1

REV. NO. : 00

DO NOT SCALE THE DRAWING. IF IN DOUBT, PLEASE ASK

6. TECHNICAL PERFORMANCE PARAMETER TABLE

MODEL	EFFECTIVE AIR SUPPLY AREA (m ²)	AIR VOLUME (m ³ /h)	PRESSUR LOSS (Pa)	NOISE dB (A)	LENGTH OF ISOTHERMAL FLOW'S RUNNING Ln(m)	TERMINAL AIR VELOCITY (m/s)
160	0.005	100	18.5	36	10.7	0.25
		125	22.8	40	13.5	
		160	56	44	17.4	
		200	82	48	22.2	
		250	116	52	27.3	
		125	22.8	40	6.7	0.5
		160	56	44	8.6	
		200	82	48	10.8	
		250	116	52	13.5	
		320	144	56	16.3	
200	0.009	160	10	38	12.7	0.25
		200	21	42	16	
		250	54	46	20	
		320	82	50	25.7	
		400	116	54	32.2	
		200	21	42	6.9	0.5
		250	54	46	9.9	
		320	82	50	12.6	
		400	116	54	16	
		500	142	58	18.5	

TOLERANCES ON ALL DIMENSION = +3mm
ALL TOLERANCES AS IS/INDUSTRY SPECIFICATONS

BALAJI AIRVENT PRODUCTS

24, AMRUT INDUSTRIAL ESTATE NO.1 K.T. INDUSTRIAL PARK,
GAURAIKADA, SECTOR-2, VALIV, VASAI (EAST) DIST. THANE-401 208

TITLE

G.A. DRAWING FOR JET NOZZLE
TECHNICAL PERFORMANCE TABLE

DRN.

-

DSGN.

-

DRG. NO. :

DATE

-

SCALE

N.T.S

SHT 1 OF 1

REV. NO. : 00

DO NOT SCALE THE DRAWING. IF IN DOUBT, PLEASE ASK

6. TECHNICAL PERFORMANCE PARAMETER TABLE

MODEL	EFFECTIVE AIR SUPPLY AREA (m ²)	AIR VOLUME (m ³ /h)	PRESSUR LOSS (Pa)	NOISE dB (A)	LENGTH OF ISOTHERMAL FLOW'S RUNNING Ln(m)	TERMINAL AIR VELOCITY (m/s)
250	0.0145	250	11	40	16.9	0.25
		320	22	44	25.6	
		400	55	48	30.4	
		500	81	51.8	35.6	
		630	116	55.4	43.2	
		320	22	44	8.4	0.5
		400	55	48	12.5	
		500	81	51.8	15.6	
		630	116	55.4	18.6	
		800	142	59	21.4	
315	0.023	400	12.8	42	20	0.25
		500	21	45.4	25	
		630	46	49	30.2	
		800	68	52	37	
		1000	94	55	44	
		500	21	45.4	9.9	0.5
		630	46	49	12.5	
		800	68	52	15	
		1000	94	55	18.4	
		1250	118	58.5	21.6	

TOLERANCES ON ALL DIMENSION = +3mm
ALL TOLERANCES AS IS/INDUSTRY SPECIFICATONS

BALAJI AIRVENT PRODUCTS

24, AMRUT INDUSTRIAL ESTATE NO.1 K.T. INDUSTRIAL PARK,
GAURAIKADA, SECTOR-2, VALIV, VASAI (EAST) DIST. THANE-401 208

TITLE

G.A. DRAWING FOR JET NOZZLE
TECHNICAL PERFORMANCE TABLE

DRN.

-

DSCN.

-

DRG. NO. :

DATE

-

SCALE

N.T.S

SHT 1 OF 1

REV. NO. : 00

DO NOT SCALE THE DRAWING. IF IN DOUBT, PLEASE ASK

6. TECHNICAL PERFORMANCE PARAMETER TABLE

MODEL	EFFECTIVE AIR SUPPLY AREA (m ²)	AIR VOLUME (m ³ /h)	PRESSUR LOSS (Pa)	NOISE dB (A)	LENGTH OF ISOTHERMAL FLOW'S RUNNING Ln(m)	TERMINAL AIR VELOCITY (m/s)
400	0.0415	630	8	43	22.2	0.25
		800	17	45.6	28.4	
		1000	31	49	34	
		1250	58	52.5	40	
		1600	80	56	46	
		800	17	45.6	10.9	0.5
		1000	31	49	14	
		1250	58	52.5	16.8	
		1600	80	56	19.7	
		2000	102	59	22.8	

TOLERANCES ON ALL DIMENSION = +3mm
ALL TOLERANCES AS IS/INDUSTRY SPECIFICATONS

BALAJI AIRVENT PRODUCTS

24, AMRUT INDUSTRIAL ESTATE NO.1 K.T. INDUSTRIAL PARK,
GAURAIKADA, SECTOR-2, VALIV, VASAI (EAST) DIST. THANE-401 208

TITLE

**G.A. DRAWING FOR JET NOZZLE
TECHNICAL PERFORMANCE TABLE**

DRN.

-

DSGN.

-

DRG. NO. :

DATE

-

SCALE

N.T.S

SHT 1 OF 1

REV. NO. : 00